

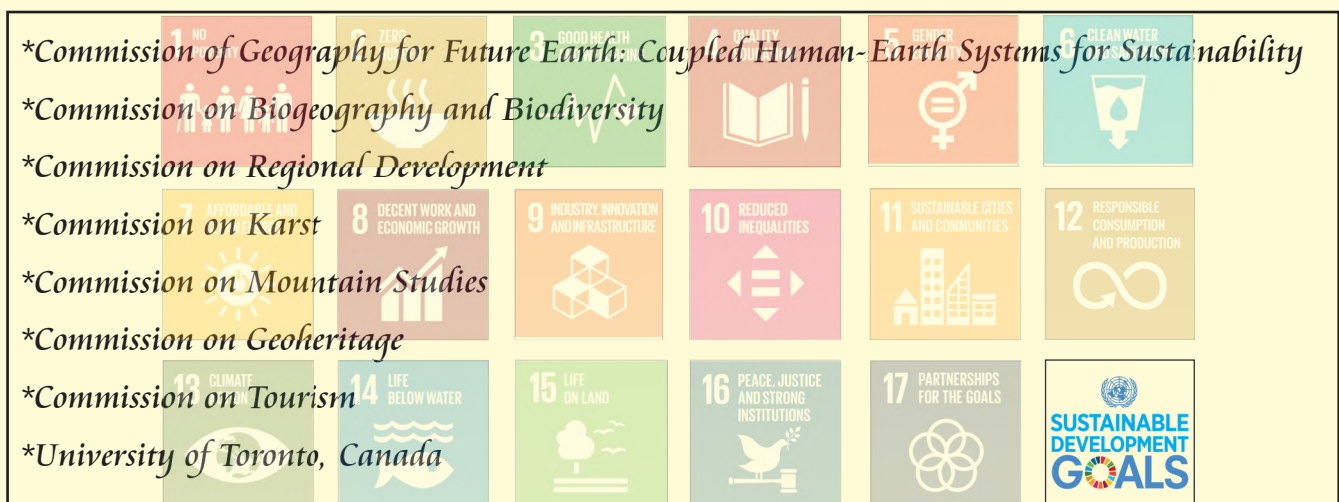


# International Geographical Union India, International Conference (Virtual), 2020

**on**

## *Global to Local Sustainability and Future Earth*

*In Collaborations With*



**Prof. Sadhana Kothari**  
Convener & Head

**Prof. Seema Jalan**  
Co - Convener

**Dr. Bhanwar Vishvendra Raj Singh**  
Organizing Secretary

**Local Organizing Committee**

**Dr. Devendra Singh Chauhan, Dr. Sabhia Khan, Dr. Vijai Singh Meena, Ms. Urmi Sharma**

**Organised by**

**Department of Geography, Faculty of Earth Sciences  
Mohanlal Sukhadia University  
Udaipur, Rajasthan, India - 313001**

[iguudaipur2020@gmail.com](mailto:iguudaipur2020@gmail.com)



# Report of IGU, INDIA INTERNATIONAL CONFERENCE, 2020



IGU, Udaipur 2020, 18th to 20th December



Administrative Block, MLSU, Udaipur

The IGU, India International Conference 2020 on “Global to Local Sustainability & Future Earth” organized by the Department of Geography, Mohanlal Sukhadia University, Udaipur, Rajasthan, INDIA on Dec. 18 - 20, 2020.

The International Geographical Union (IGU) is an international, non-governmental, professional organization devoted to the development of the discipline of Geography. The purposes of the IGU are primarily to promote Geography through initiating and coordinating geographical research and teaching in all countries of the world. Its work is conducted through the instruments of its National Committees, Commissions and Task Forces.

This IGU, India International Conference 2020 was joined by more than 900 participants who were representing more than 40 countries including; Afghanistan, Kazakhstan, Algeria, Kenya, Argentina, Kyrgyzstan, Australia, Libya, Bangladesh, Lithuania, Benin, Macedonia, Canada, Mongolia, Myanmar, Nigeria, China, Philippines, Egypt, Poland, Ethiopia, Qatar, Haiti, Romania, Hungary, Russia, India, South Africa, Indonesia, Thailand, Iran, United States, Italy, Vietnam, Japan, Zambia, Zimbabwe, etc.

Three days' conference was held in Mohanlal Sukhadia university, in the meeting hall and other buildings. More than One Thousand of attendees, paper presenters, keynote speakers, panelists and tutorial participants, students have benefitted in many ways from this conference. More than 200 scientific papers were presented by authors from all participated countries.

All Invited, Keynote and Tutorial Speakers from different countries attended the themes based Panel discussion on 8 different commissions and addressed to audience and shared their knowledge and rich experience.

**INTERNATIONAL GEOGRAPHICAL UNION**  
INDIA INTERNATIONAL CONFERENCE (VIRTUAL), 2020

Focal Theme  
**Global to Local Sustainability & Future Earth**  
December, 18 to 20, 2020

In Collaboration With

- COMMISSION ON FUTURE EARTH
- COMMISSION ON GEOHERITAGE
- COMMISSION ON TOURISM
- COMMISSION ON LOCAL AND REGIONAL DEVELOPMENT
- COMMISSION ON BIOGEOGRAPHY AND BIODIVERSITY
- COMMISSION ON HUMANITIES
- COMMISSION ON RISK

Organized by  
DEPARTMENT OF GEOGRAPHY, FACULTY OF EARTH SCIENCES  
MOHANLAL SUKHADIA UNIVERSITY, UDAIPUR - 313001 (RAJASTHAN) INDIA  
E-mail : iguudaipur2020@gmail.com | Website : www.mlsu.ac.in

## Conference Scope

Main theme "Global to local Sustainability and future earth" of this conference was classified into 15 sub-themes which were related to Geographical research areas and development fields.

As a result, many Keynote, Tutorial and Technical Sessions have been prepared in accordance with conference scope to discuss the Challenges, Opportunities and Problems of Global to Local Sustainability in various fields.

This Conference was organized in collaboration with 6 Commissions of IGU and 2 side events with other institution.

There were the listed themes in which panel discussions were happened

\*Commission discussion on The role of global to local and vocal to local initiatives for regional development

\*Commission discussion on The role of Karst Landforms Sustainability in biodiversity for future earth

\*Commission discussion on Tourism Geographies: Exemplifying interdisciplinary research in geography

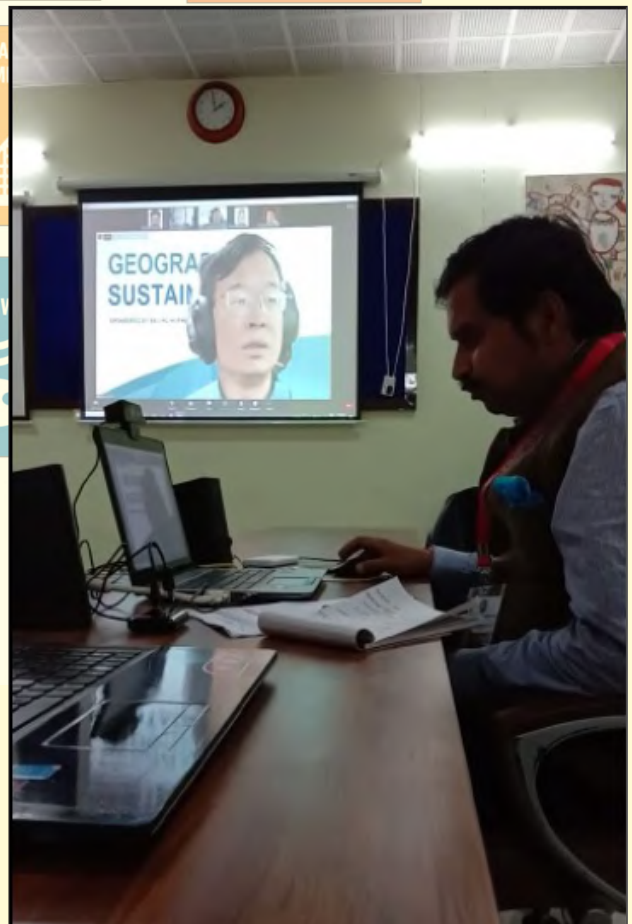
\*Commission discussion on the role of sustainability in biodiversity for the future earth

\*Commission discussion on Global to local initiative for Future Earth: Coupled Human Earth Systems for Sustainability

\*Commission discussion on Water: Essence of Survival Conversations About its Revolutionary possibilities

\*Commission discussion on The Crisis in Between Highland and Lowland

\*Commission discussion on The Role of Natural & Cultural Heritage for Sustainable Regional Development





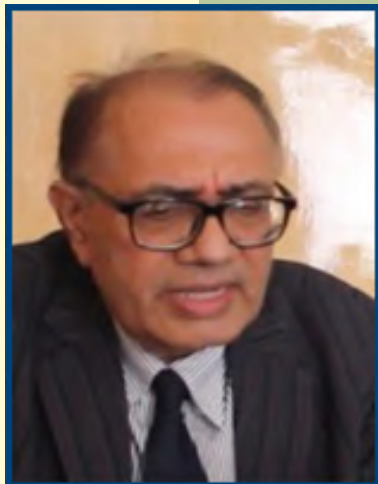
Shri Kalraj Mishra (Hon'ble Governor)



Inaugural Session with Prof. Amarika



Inaugural Session



Prof. R. B. Singh



## WELCOMING AND OPENING CEREMONY

The first day of conference was started with Welcoming and Opening Ceremony at the Vice Chancellor (V. C.) Secretariat Building of Mohanlal Sukhadia University. The following delegates addressed to participants with short welcoming speeches.

**Shri Kalraj Mishra (Chief Guest)**  
 Hon'ble Governor of Rajasthan & Chancellor, MLSU, Udaipur (Raj.)

**Shri Gajendra Singh Shekhawat (Guest of Honor)**  
 Hon'ble Union Cabinet Minister, Ministry of Jal Shakti, Government of India

**Prof. Amarika Singh (Vice Chancellor)**  
 Hon'ble Vice Chancellor, MLSU, Udaipur (Raj.)

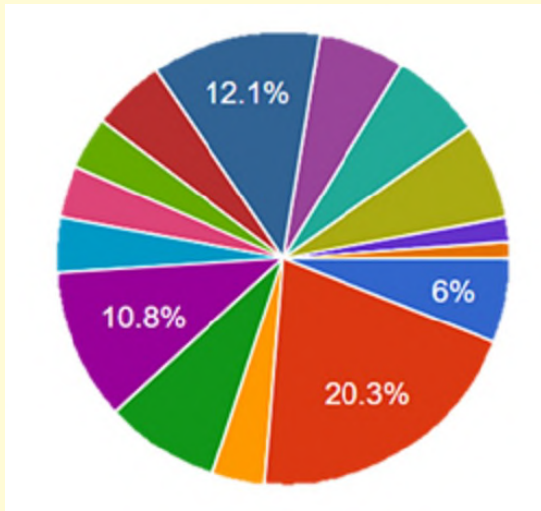
**Prof. Michael Meadows (Special Guest)**  
 President, IGU, Dept. of Environmental & Geographical Science, University of Cape Town, South Africa

**Prof. Sadhana Kothari (Convener and Head)**  
 Department of Geography, Faculty of Earth Sciences, MLSU, Udaipur

**Prof. R. B. Singh (Key Note Speaker)**  
 Secretary General & Treasurer, IGU, Dept. of Geography, Delhi School of Economics, University of Delhi.

**Dr. Bhanwar Vishvendra Raj Singh (Organizing Secretary)**  
 Department of Geography, Faculty of Earth Sciences, MLSU, Udaipur

Faculty Members Geography Dept.



Thrust Area wise representation

### Concurrent Technical Sessions

More than 1000 of attendees, paper presenters, keynote and tutorial participants, students have benefitted in many ways from this conference. More than 200 scientific papers were presented by authors from all participated countries in Technical Sessions that were held in MLS University. All accepted papers had been categorized into the following 15 session.

- Localizing the Sustainable Development
- Natural Resource Management & Conservation (A)
- Natural Resource Management & Conservation (B)
- Global to Local Sustainability of Resources
- Challenges of Sustainable Development in Global Pandemic
- Biodiversity Conservation & Ecotourism
- Sustainable Development of Geoheritage & Geotourism
- Regional Development & Planning
- Future Urban Sustainability & Migration problems
- Future Earth Initiatives & Challenges
- Risk and Disaster Management (A)
- Risk and Disaster Management (B)
- Role of Agriculture in the Sustainable Development (A)
- Role of Agriculture in the Sustainable Development (B)
- Adaptation and Mitigation of Climate Change

- People, Peace and prosperity of 21st Century
- Environmental changes & Conservation of Karst Topography
- Mountain Ecosystem and Highland and Lowland interactions

### Day 1: 18th December, 2020

Six Technical Sessions were completed on the 1st day of conference.

Two panel discussions were completed on the following Commissions.

I. Commission on Regional Development

II. Commission on Karst

The International Geographical Union's Commission on Local and Regional Development provides an international forum for the study of issues related to such matters as local and regional development, reorganization of space, local development in the urban and rural space, and the role of institutions and agencies in developing and reshaping the settled space. The interests of the Commission are exhibited in developing and developed regions and nations.



Prof. Sudesh Nangia	Centre for the Study of Regional Development, JNU, India
Dr. V. S. Negi	Dept. of Geography, SBSC (Eve.), University of Delhi, India
Prof. Kaushal Kumar	Centre for the Study of Regional Development, JNU, India
Prof. Tony Shrensens	University of New England, Australia
Prof. Atsushi Taira	Faculty of Education, Kagawa University, Japan


**INTERNATIONAL GEOGRAPHICAL UNION  
INDIA INTERNATIONAL CONFERENCE 2020**

*Local Theme*  
**GLOBAL TO LOCAL SUSTAINABILITY & FUTURE EARTH**


**COMMISSION ON KARST**

PANEL DISCUSSION  
ON  
**THE ROLE OF KARST LANDFORMS SUSTAINABILITY IN BIODIVERSITY FOR FUTURE EARTH**  
Date : 18<sup>th</sup> December 2020 TIME : 03.30 P.M. - 05.00 P.M. (IST)


**PRO. DR. HAARUN  
(INDONESIA)  
(Chair)**




**DR. NARUL ISLAM  
(BANGLADESH)**



**DR. OTOJIT  
KSHETRIMALAYUM  
VV Giri, National Labour  
Institute Nodia, INDIA**



**Dr. JUNBING PU  
International Research  
Center on karst,  
UNESCO**



**DR. DHANJIT DEKA**

- *The Karst Commission aims:*
- *To advance knowledge of the geomorphology and hydrology of karst, especially in relation to the impacts of human activities.*
- *To improve understanding of the issues involved in sustainable development of karst terrains.*
- *To improve understanding of the natural and anthropogenic hazards in karst areas.*

2 HUNGER	Prof. Haarun	Faculty of Geography, The University of Gadjah Mada, Indonesia
3 GOOD HEALTH AND WELL-BEING	Prof. Nurul Islam	Department of Geography & Environment, Jahangirnagar University, Bangladesh
4 CLEAN WATER AND SANITATION	Dr. Dhanjit Deka	B Borooah College, Guwahati, Assam, India

**Day 2: 19th December, 2020**  
Seven Technical Session were completed on the 2nd day of conference  
Three panel discussions and 1 Side Event were completed on the following Commissions:

- (I) Commission on Tourism
  - (II) Commission on Biogeography and Biodiversity
  - (III) Commission for Future Earth
- And One side event in collaboration with University of Toronto, Canada

**Tourism Geographies:**  
Exemplifying Interdisciplinary Research in Geography

International Geographical Union  
India International Conference 2020 (Virtual)  
Global to Local Sustainability & Future Earth

Organized by  
Department of Geography, Faculty of Earth Sciences  
Maharaja Ghatkoti University, Kolkata, India

Featuring:  
Alan A. Lew, Northern Arizona University, USA  
C. Michael Hall, University of Canterbury, New Zealand  
Dominic Lapointe, Université du Québec à Montréal, Canada  
Sonya Graci, Ryerson University, Canada  
Chin Ee Ong, Sun Yat Sen University, China  
Meghan Muldoon, Arizona State University, USA  
Joseph M. Cheer, Wakayama University, Japan

Date/Time:  
Saturday, 19 December  
8:30 to 10:30 IST  
(Via Zoom)  
Zoom Link: TBA

The IGU Tourism Commission is part of the International Geographical Union.

The commission's full name is: Commission on the Geography of Tourism and Leisure and Global Change

In general, IGU commission names are sustained for eight years after which a new commission is formed.

Prof. Alan A. Lew	Geography, Planning and Recreation Department, Northern Arizona University, USA
Prof. C. Michael Hall	Management, Marketing and Entrepreneurship University of Conterbury, New Zealand
Prof. Dominic Lapointe	Département d'études urbaines et touristiques, Université du Que`bec a` Montre`al, Canada
Prof. Sonya Graci	Hospitality and Tourism Management, Ryerson University, Canada
Prof. Chin Ee Ong	School of Tourism and Management (STM), Sun Yat Sen University, China
Prof. Meghan Muldoon	School of Community Resources and Development, Arizona State University, USA
Prof. Joseph M. Cheer	Center for Tourism Research, Wakayama University, Japan

The International Geographical Union's Commission on Biogeography and Biodiversity focuses on improving the understanding of the concept of ecosystem and its conservation. There are a variety of ecosystems such as those that occur in deserts, forests, wetlands, mountains, lakes, rivers, and agricultural landscapes. In each ecosystem, living creatures, including humans, form a community, interacting with one another and with the air, water, and soil around them.

This can be applied to diversity at all levels of biological organization: diversity among individuals within a particular species (genetic diversity), the diversity of species in an ecosystem, and the diversity of ecosystems on Earth.

Prof. Dr. John Sinclair	Natural Resources Institute University of Manitoba, Canada
Prof. Branko Micevski	Department for Animal Taxonomy and Ecology, Institute of Biology Faculty of Natural Sciences, Skopje, Macedonia
Prof. Radhey Shyam Sharma	Department of Environmental Studies, University of Delhi, India
Dr. B. W. Pandey	Department of Geography, DSE, University of Delhi, India
Dr. Devraj Singh	Environmental Resilience Institute, Indiana University, USA
Mr. Rajib Biswal	University of Manitoba, Winnipeg, Manitoba, Canada

The mission of the proposed commission of Geography for Future Earth: Coupled Human-Earth Systems for Sustainability is to promote Geography for people to thrive in a sustainable and equitable world.

Dr. Mark Stafford Smith	Science Committee Future Earth, Australia
Prof. Wenwu Zhao	Faculty of Geographical Science, Beijing Normal University, China
Prof. M.S.Nathawat	School of Science, Indra Gandhi National Open University, India
Prof. R. B. Singh	Secretary, General and Treasurer, IGU
Prof. K. Kumaraswamy	ICSSR-Senior Fellow, Department of Geography, Bharathidasan

Under the banner of IGU and Future Earth, the commission will serve as the focal point for developing, coordinating, and implementing interdisciplinary research and education related to coupled human-earth system dynamics and sustainable development.

The commission will seek to build and connect knowledge to increase the impact of research, to explore new development paths, and contribute to achieving goals on global sustainable development by finding new ways to sustainable development.

INTERNATIONAL GEOGRAPHICAL UNION  
INDIA INTERNATIONAL CONFERENCE 2020

Local Theme  
**GLOBAL TO LOCAL SUSTAINABILITY & FUTURE EARTH**

COMMISSION ON BIOGEOGRAPHY AND BIODIVERSITY

PANEL DISCUSSION  
ON  
THE ROLE OF SUSTAINABILITY IN BIODIVERSITY FOR THE FUTURE EARTH  
Date : 19<sup>th</sup> December 2020 TIME : 09.00 A.M. - 10.30 A.M. (IST)

**PROF. DR. JOHN SINCLAIR**  
Director, Natural Resources Institute  
University of Manitoba, Canada  
(Chair)

**DR. B. W. PANDEY**  
Secretary, Biogeography and Biodiversity,  
Delhi School of Economics,  
University of Delhi  
(Moderator)

**BRANKO MICEVSKI**  
Head of Department, Ss. Cyril and Methodius  
University, Skopje,  
Dpt. for Animal Taxonomy  
and Ecology

**PRO. RADHEY SHYAM SHARMA**  
Department of Environmental Studies,  
University of Delhi

**DR. DEVRAJ SINGH**  
Expert on Migratory Birds,  
Environmental Resilience Institute  
Indiana University, USA

**RAJIB BISWAL**  
University of Manitoba,  
Winnipeg, Manitoba, Canada

INTERNATIONAL GEOGRAPHICAL UNION  
INDIA INTERNATIONAL CONFERENCE, 2020

Local Theme  
**GLOBAL TO LOCAL SUSTAINABILITY & FUTURE EARTH**

COMMISSION ON GEOGRAPHY FOR FUTURE EARTH : COUPLED HUMAN-EARTH SYSTEMS FOR SUSTAINABILITY

PANEL DISCUSSION  
ON  
GLOBAL TO LOCAL INITIATIVE FOR FUTURE EARTH : COUPLED HUMAN-EARTH SYSTEMS FOR SUSTAINABILITY  
Date : 19<sup>th</sup> December 2020 TIME : 02.00 P.M. - 03.30 P.M. (IST)

**DR. MARK STAFFORD SMITH**  
Science Committee Future Earth,  
Australia  
(Chair)

**PROF. R. B. SINGH SIR (INDIA)**  
Secretary General and Treasurer  
International Geographical  
Union  
(Moderator)

**DR. PROF. WENWU ZHAO**  
Beijing Normal University,  
China

**PROF. K. KUMARASWAMY**  
Emeritus Professor,  
ICSSR-Senior Bharathidasan  
University, India

**PROF. M. S. NATAWAT**  
IGNOU, India

**INTERNATIONAL GEOGRAPHICAL UNION  
INDIA INTERNATIONAL CONFERENCE 2020**

*Local Theme*  
**GLOBAL TO LOCAL SUSTAINABILITY & FUTURE EARTH**

**COMMISSION ON KARST**  
PANEL DISCUSSION  
ON  
**THE ROLE OF KARST LANDFORMS SUSTAINABILITY IN BIODIVERSITY FOR FUTURE EARTH**  
Date : 18<sup>th</sup> December 2020 TIME : 03.30 P.M. - 05.00 P.M. (IST)

**PRO. DR. HAARUN  
(INDONESIA)  
(Chair)**

**DR. NARUL ISLAM  
(BANGLADESH)**

**DR. OTOJIT  
KSHETRIMAYUM**  
VV Giri, National Labour  
Institute Nodia, INDIA

**Dr. JUNBING PU**  
International Research  
Center on karst,  
UNESCO

**DR. DHANJIT DEKA**

*Water, it's found everywhere on Earth, from the polar ice caps to steamy geysers. And wherever water flows on this planet, you can be sure to find life.*

*Why is water essential for life?*

*Water is defined as an inorganic, transparent, tasteless, and colorless chemical substance. It is the main constituent of the earth's hydrosphere. Water is considered to be an essential part of life because of the following reasons:*

<b>2 ZERO WASTE</b> Prof. R. B. Singh	<b>3 GOOD HEALTH AND WELL-BEING</b> Secretary, General and Treasurer, IGU
Dr. Romila Verma Department of Geography and Planning, University of Toronto, Canada	Ms. Hilary Van Welter CEO, Ascenia, Canada
<b>5 GENDER EQUALITY</b> Dr. Tejbir Singh Rana Department of Geography, Shivaji College, University of Delhi, India	<b>6 CLEAN WATER AND SANITATION</b> Mr. Hernan L. Bianchi Benignia Department of Geography and Planning, University of Toronto, Canada

**Day 3: 20th December, 2020**

*Five Technical Session were completed on the last day of conference*

*Two panel discussions were completed on the following Commissions:*

- (I) Commission on Mountain Studies
  - (II) Commission on Geoheritage
- The IGU Commission on Mountain Studies (IGU\_CMS) inherits the traditions of the mountain commissions of the past decades, starting with the Commission on High-Attitude Geocology (1968-1976). Since then, we have noted a clear trend towards the interdisciplinary of mountain research. In this regard, in the 1990s, the commission was named Mountain Geocology and Sustainable Development*

**INTERNATIONAL GEOGRAPHICAL UNION  
INDIA INTERNATIONAL CONFERENCE 2020**

*Local Theme*  
**GLOBAL TO LOCAL SUSTAINABILITY & FUTURE EARTH**

**Commission on Mountain Studies**  
PANEL DISCUSSION  
ON  
**THE CRISIS IN BETWEEN HIGHLAND AND LOWLAND INTREACTION**  
DATE: 20th December 2020 TIME: 08 : 30 A.M. - 10 : 00 A.M.

**FAUSTO O. SARMIENTO**  
Director  
Neotropical Montology Collaboratory  
University of Georgia, USA / ECUADOR

**JUN MATSUMOTO**  
Professor  
Department of Geography  
Tokyo Metropolitan University, Japan

**DR. PANKAJ KUMAR**  
Secretary  
Commission on Mountain Studies

**Prof. SHOURASENI SEN ROY**  
Professor  
Department of Geography and Regional Studies  
University of Miami, USA

**PROF NANDNI SINGH**  
Professor  
Rajive Gandhi University, Itanagar, India

<b>8 DECENT WORK AND ECONOMIC GROWTH</b> Prof. Fausto O. Sarmiento Neotropical Montology Collaboratory, University of Georgia, USA /	<b>9 INDUSTRY, INNOVATION AND INFRASTRUCTURE</b> Prof. Jun Matsumoto Department of Geography, Tokyo Metropolitan University, Japan
<b>11 AFFORDABLE AND CLEAN ENERGY</b> Dr. Pankaj Kumar Department of Geography, DSE, University of Delhi, India	<b>12 RESPONSIBLE CONSUMPTION AND PRODUCTION</b> Prof. Sandag Amgalan Institute of Geography & Geo - Ecology, Mongolian Academy of Sciences, Ulaanbaatar, Mongolia
<b>14 LIFE BELOW WATER</b> Prof. Shouraseni Sen Roy Department of Geography and Regional Studies, University of Miami, USA	<b>15 LIFE ON LAND</b>

*Goal: To bring together the IGU community working in mountain areas to promote mountain research, disseminate and exchange of knowledge and experience between researchers from different countries and scientific schools in the field of mountain geography research.*

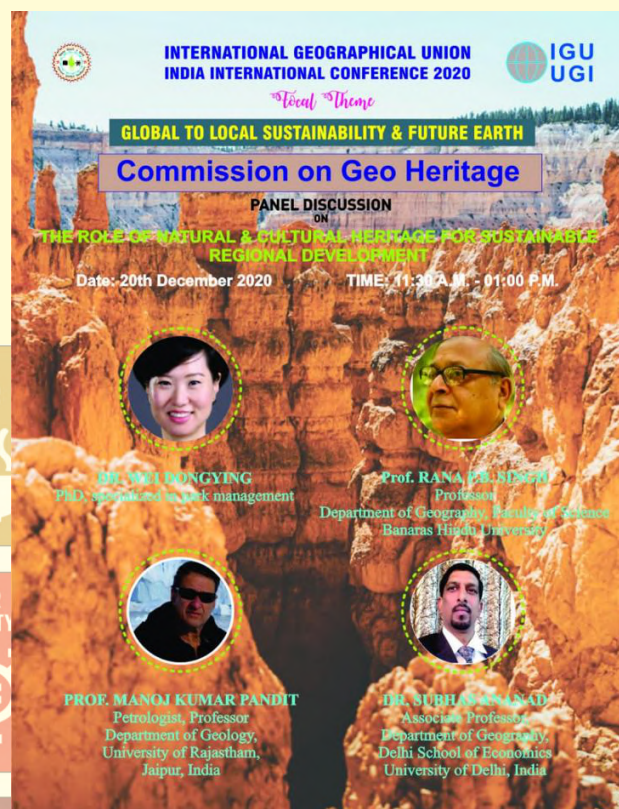


*Commission on Geoheritage/Geoparks (COG) of the International Geographical Union (IGU) is to promote the development of Geoparks from the Geographical perspectives.*

*The objectives of the Commission include:*

- (i) communicating the role of Geoparks as tools of education, recreation and nature conservation; further developing the concept of sustainability as applied to Geoparks.*
- (ii) communicating the importance of understanding a broad range of processes that affect the sustainable development of Geoparks, including the natural environment, political, and socio-economic processes;*

Dr. Wei Dongying	Faculty of Geographical Science, Beijing Normal University, China
Prof. Rana P.B. Singh	Faculty of Science, Banaras Hindu University, India
Prof. Manoj Kumar Pandit	Department of Geology, University of Rajasthan, Jaipur, India
Dr. Subhash Anand	Department of Geography, DSE, University of Delhi, India



**INTERNATIONAL GEOGRAPHICAL UNION  
INDIA INTERNATIONAL CONFERENCE 2020**

*Local Theme*

**GLOBAL TO LOCAL SUSTAINABILITY & FUTURE EARTH**

**Commission on Geo Heritage**

**PANEL DISCUSSION  
ON  
THE ROLE OF NATURAL & CULTURAL HERITAGE FOR SUSTAINABLE  
REGIONAL DEVELOPMENT**

Date: 20th December 2020      TIME: 11:30 A.M. - 01:00 P.M.

**DR. WEI DONGYING**  
PhD supervisor & task management

**Prof. RANA P.B. SINGH**  
Professor  
Department of Geography, Faculty of Science  
Banaras Hindu University

**PROF. MANOJ KUMAR PANDIT**  
Petrologist, Professor  
Department of Geology,  
University of Rajasthan,  
Jaipur, India

**DR. SUBHASH ANAND**  
Associate Professor  
Department of Geography,  
Delhi School of Economics  
University of Delhi, India

### Valedictory Ceremony

*The last day of conference started with closing Ceremony at the meeting Hall in the Golden Jubilee Guest House Building of Mohanlal Sukhadia University. The following delegates addressed to participants with short speeches.*

- *Chief of Guest- Prof. Rajeev Jain, Hon'ble Vice Chancellor, University of Rajasthan, Jaipur*
- *Guest of Honor- Prof. Prithvish Nag, Former Vice Chancellor, Mahatma Gandhi Kashi Vidyapith, Varanasi*
- *Guest of Honor - Prof. Bojie Fu, IGU Vice-President*
- *Chairperson- Prof. R. B. Singh, IGU- General Secretary, New Delhi*
- *Keynote Speaker - Prof. H. S. Sharma, Former Dean, faculty of Science, University of Rajasthan, Jaipur*
- *Special Guest - Prof. R. N. Vyas, Former Dean, UCSSH, MLSU*
- *Special Guest: Prof. H. S. Sharma, Former Dean, Faculty of Science, University of Rajasthan, Jaipur*
- *Special Guest: Sh. Rajinder Singh Ahuja, Asso. Vice-President, HSE, HZL, Udaipur*
- *Prof. Sadhana Kothari- Convener and Head, IGU-India International Conference 2020, from Department of Geography, MLSU, Udaipur*
- *Prof. Seema Jalan - Co-Convener of the conference, Department of Geography, MLSU*
- *Dr. Bhanwar Vishvendra Raj Singh - Organizing Secretary of the conference*



Valedictory Ceremony in MLSU



Honoring Chief Guest and Guest of Honor



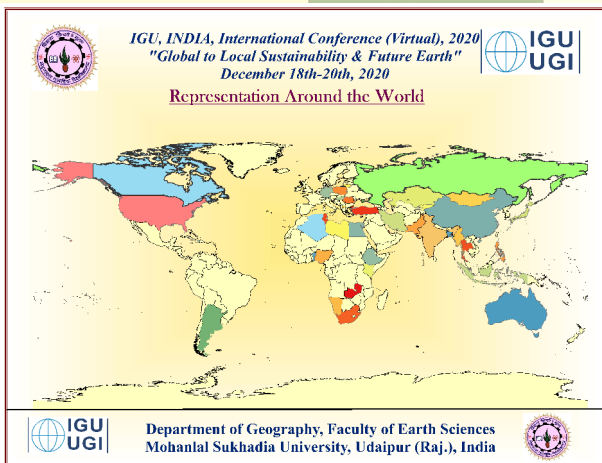
Glimpses of Valedictory Ceremony



Glimpses of Valedictory Ceremony



Glimpses of Valedictory Ceremony



Worldwide Representation

As the Chief Guest of the closing ceremony of the International Conference, Honorable Prof. Dariyav Singh Chundawat, Vice Chairman Rajasthan State Higher Education Council has addressed the participants and said that the International Conference by the Department of Geography under the direction of Prof. America Singh is a commendable effort.

Secretary General and Treasurer of International Geographical Association IGU, Prof. RB Singh termed the three-day International Conference organized by the Geography Department of Mohanlal Sukhadia University a historic achievement

As Honorable Guest Prof. Prithvi Nag gave a statement regarding population control and geographical resources.

Prof. HS Sharma provided geographical and technical guidance in the context of climate change.

During the closing ceremony program, Prof. Seema Jalan (Co -Convener), Dr. Devendra Singh Chauhan, Dr. Sabhya Khan, Dr. Vijai Singh Meena, Ms. Urmi Sharma and Dr. Lalit Singh Jhala, were present.

This three-day conference had around 18 technical sessions, 7 commissions and 1 collaborative event with University of Toronto, Canada.

There were 900 registered participants from around 40 countries, covering all continents (even from Antarctica!).

The conference witnessed dignitaries from all over the world who expressed their views on the focal theme Global to Local Sustainability and Future Earth.

The conference received around 350 abstracts from across the world. The conference was organized in a holistic way and had discussion on Commission Sessions and Technical Sessions for Panel Discussion and Paper Presentation respectively.

**Briefs..**

- The conference was inaugurated by Hon'ble Shri Kalraj Mishra, Governor of Rajasthan and attended by dignitaries all across the Nation.
- On the first day 6 technical session and 2 Commission Sessions were conducted.
- Second day of the conference witnessed 7 technical sessions and 4 commission sessions including one side event in collaboration with University of Toronto, Canada.
- On the last day of the conference 2 panel discussions and 5 technical sessions were scheduled and successfully conducted by the organizers.
- The technical sessions were divided on the basis of different thrust areas and Professors, Research Scholars from the Geography fraternity presented their paper on these different fields.
- Commission Sessions had eminent professors, social scientists and dignitaries from across the World who expressed their views and concerns regarding different themes and gave an insight thought on the Future Earth. The future stakeholders have surely got a roadmap for the sustainable earth.



Glimpses of Valedictory Ceremony



Glimpses of Valedictory Ceremony



Glimpses of Valedictory Ceremony



Glimpses of Valedictory Ceremony

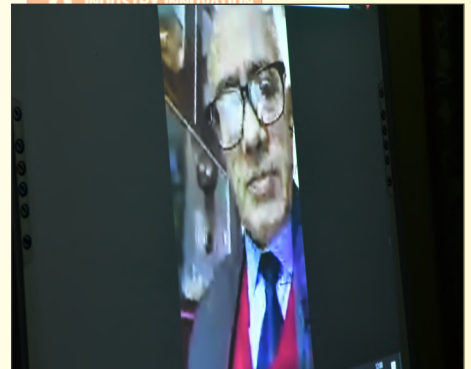
**IGU, INDIA, International Conference (Virtual), 2020**  
**"Global to Local Sustainability & Future Earth"**  
 December 18th-20th, 2020

Representation Around the Nation

Department of Geography, Faculty of Earth Sciences  
 Mohanlal Sukhadia University, Udaipur (Raj.), India

Nationwide Representation

*Glimpses of IGU, India 2020*



*Glimpses of Commissions Panel Discussion*

